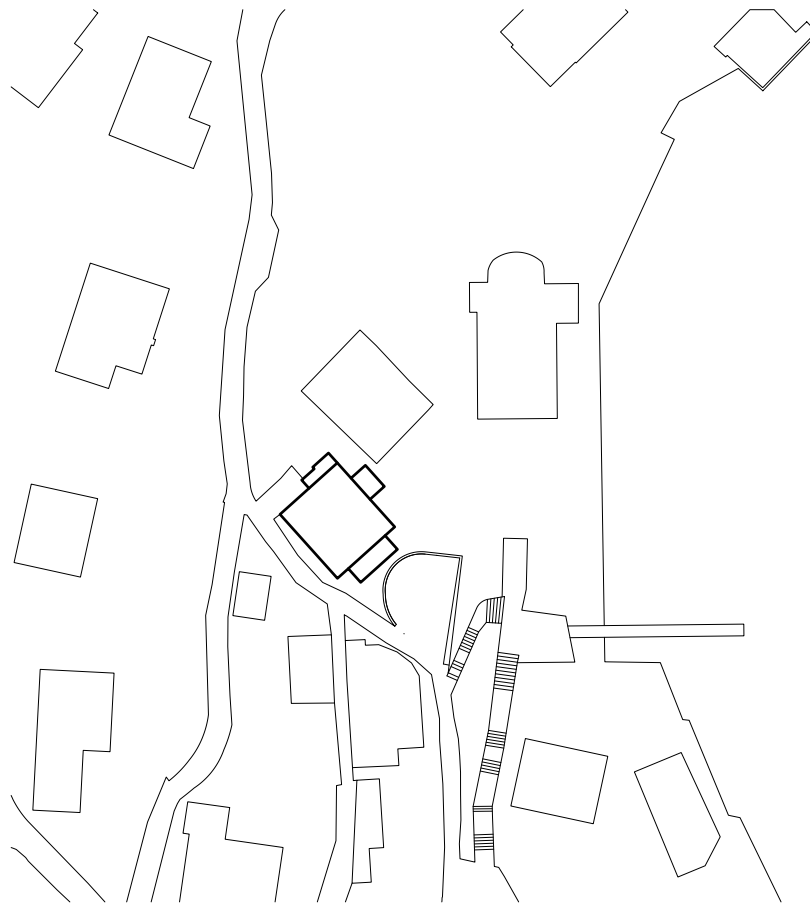
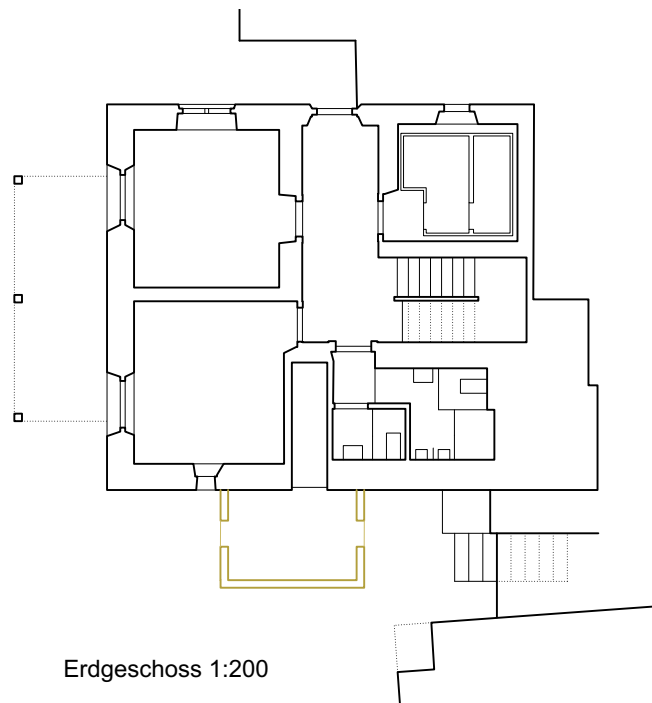


Dokumentation
Unterhalt Zwysighaus, Bauen

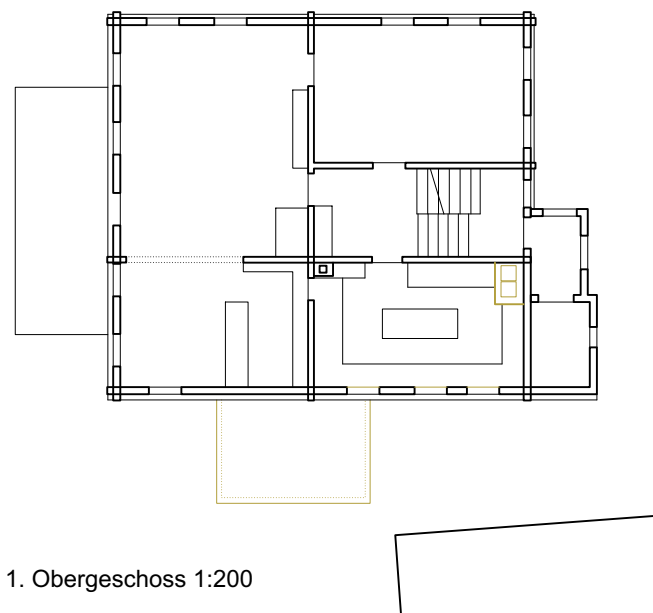
PRINT. 07.05.2024



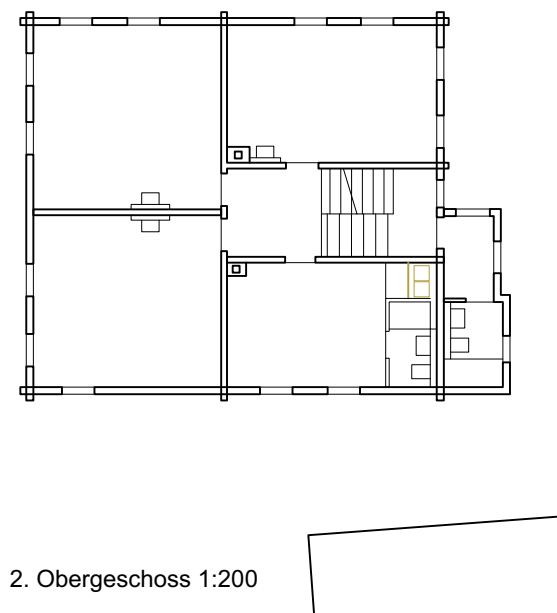
Situation 1:1000



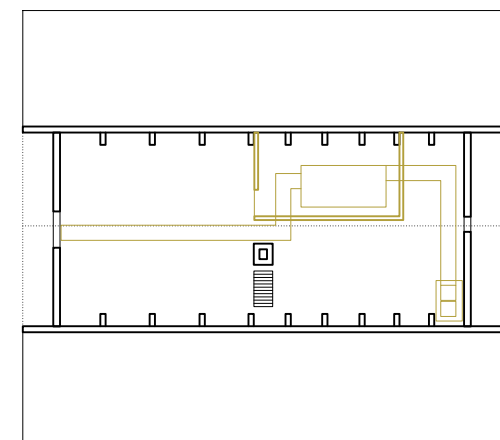
Erdgeschoss 1:200



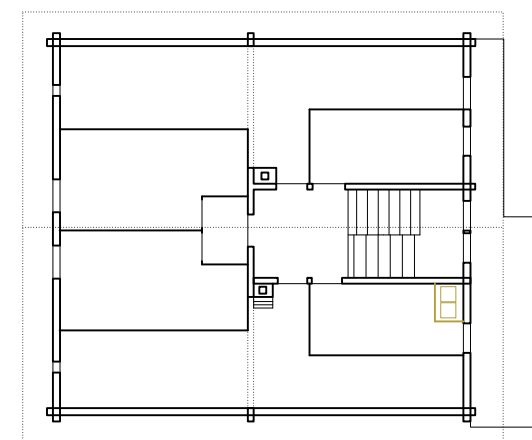
1. Obergeschoss 1:200



2. Obergeschoss 1:200



Estrichgeschoss 1:200



Dachgeschoss 1:200

PRINT: 07.05.2024

UNTERHALT ZWYSSIGHAUS, BAUEN



Fassade Nord-Ost 1:200



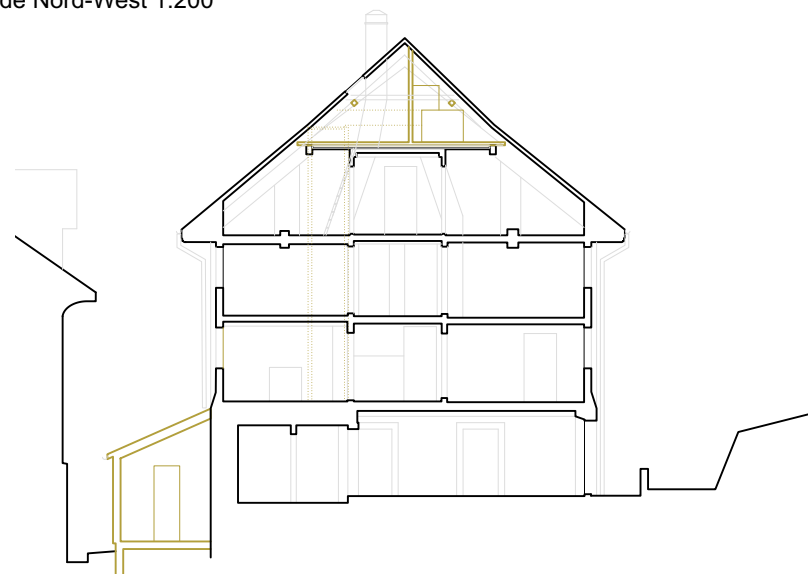
Fassade Süd-Ost 1:200



Fassade Nord-West 1:200



Fassade Süd-West 1:200



Schnitt A-A 1:200

PRINT: 07.05.2024

UNTERHALT ZWYSSIGHAUS, BAUEN